



CARE

Anita care

---

2021

---

Cup A-F

Beachwear



A woman with curly hair is smiling and holding a large, fringed straw hat. She is wearing a one-piece swimsuit with a vibrant, colorful pattern of leaves and flowers in shades of pink, orange, and blue, with a solid black bottom. The background is a bright, sunny beach scene with the ocean and sky visible.

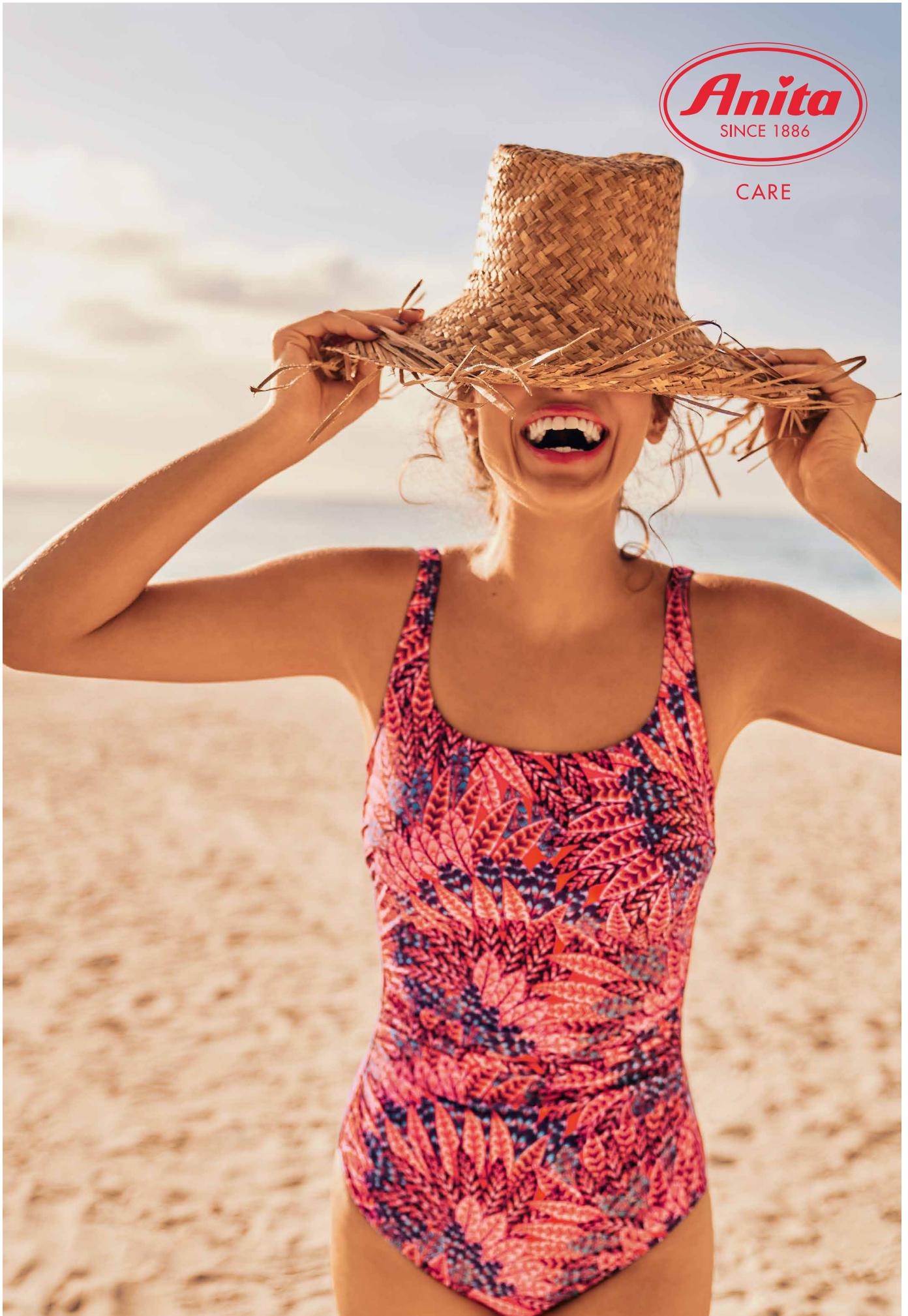
Desert  
Flowers

M1 6378.526 Praia · Cup B-D





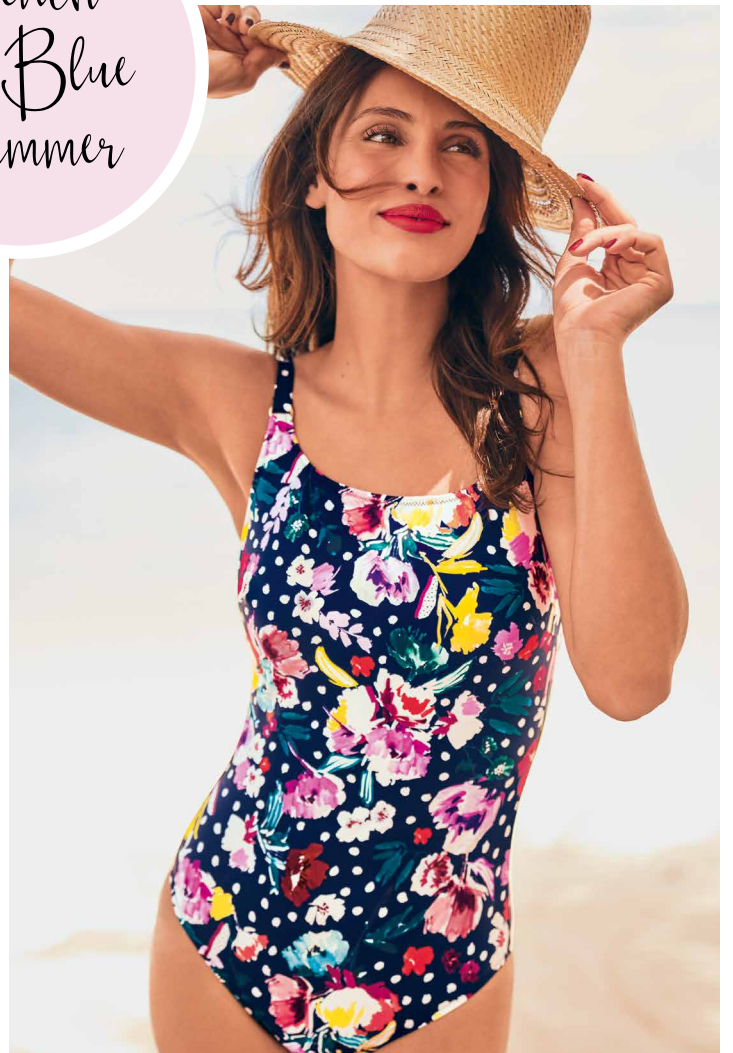
CARE





M1 8646.321 Samar

French  
Blue  
Summer



M1 6228.321 Carini · Cup B-D





CARE

M1 6538-1.321 Alba Top Mix & Match · Cup B-D + M1 8736-0.321 Ebru Bottom Mix & Match



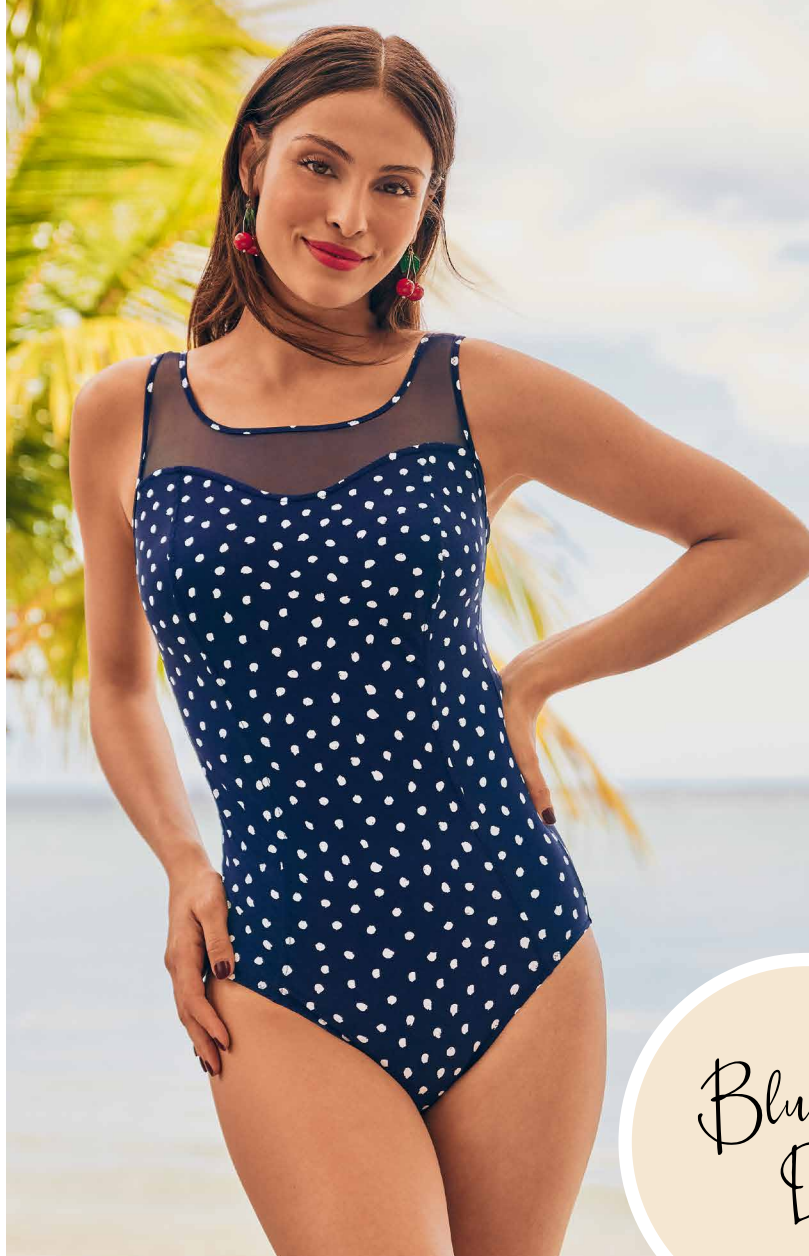


M1 6563-1.321 Mexicali Top Mix & Match · Cup B-C  
M1 8771-0.321 Ive Bottom Mix & Match





CARE



Blue  
Dots

M1 6273.321 Frascati · Cup A-C



M1 8600.321 Divar Dress



Blue  
Dots

LE DEC

M1 6573-1.321 Alassio Top Mix & Match · Cup B-D + M1 8709-0.321 Comfort Bottom Mix & Match





CARE

M1 6433.321 Kista · Cup B-D





M1 6575-1.009 Latina Top Mix & Match · Cup B-C + M1 8709-0.321 Comfort Bottom Mix & Match





CARE



M1 6200.345 Krabi · Cup B-D

Miami Stripes



M1 6266.009 Merritt · Cup A-C





A woman with her hair in a ponytail is posing on a beach. She is wearing a one-piece swimsuit with a dark navy blue side panel and a central panel with horizontal stripes in yellow, pink, purple, red, and teal. She is holding a large, clear beach ball with colorful confetti inside above her head with both hands. The background shows a clear blue sky and the ocean.

*Miami  
Stripes*

M1 6265.009 Albina · Cup B-E





CARE



M1 6212.321 Verona · Cup A-D

12 | 13



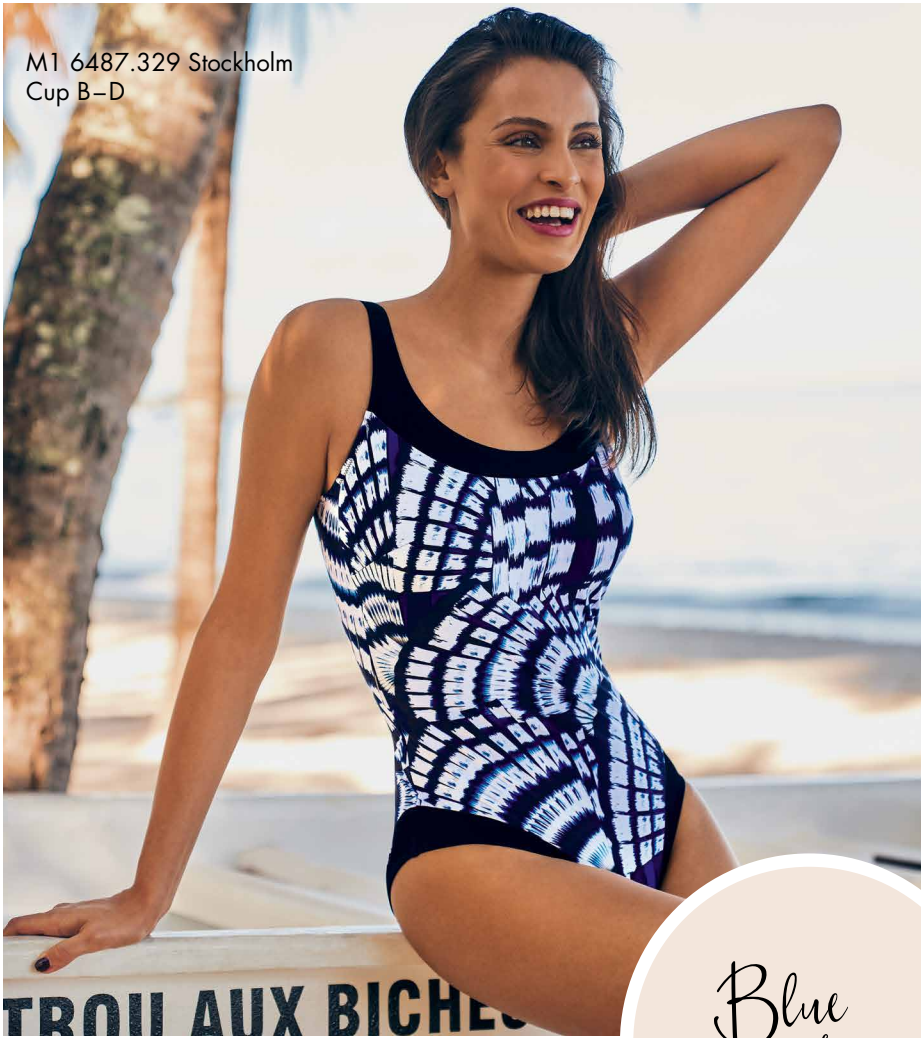


PROMOTION

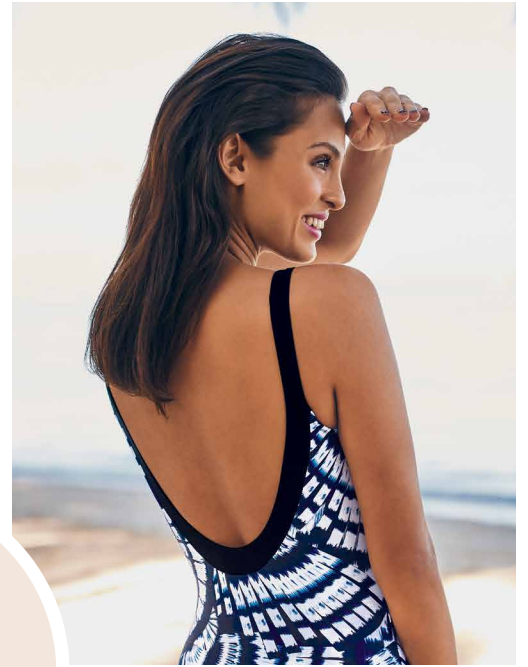
M1 6292.311 Colina · Cup A-D



M1 6487.329 Stockholm  
Cup B-D



CARE

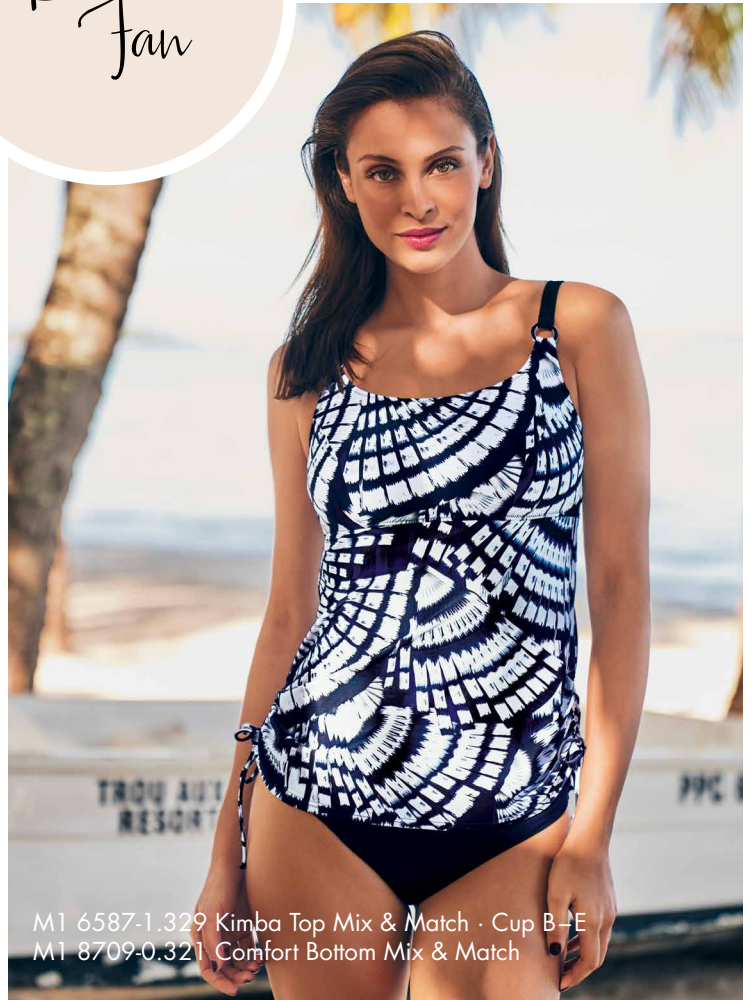


Blue  
Fan



PROMOTION

M1 6292.311 Colina · Cup A-D



M1 6587-1.329 Kimba Top Mix & Match · Cup B-E  
M1 8709-0.321 Comfort Bottom Mix & Match





M1 6272.009 Carini · Cup B-D

*Under  
the sea*



M1 6562.009 Mexicali · Cup B-C





CARE

M1 6209.318 Edina · Cup B-C

16 | 17





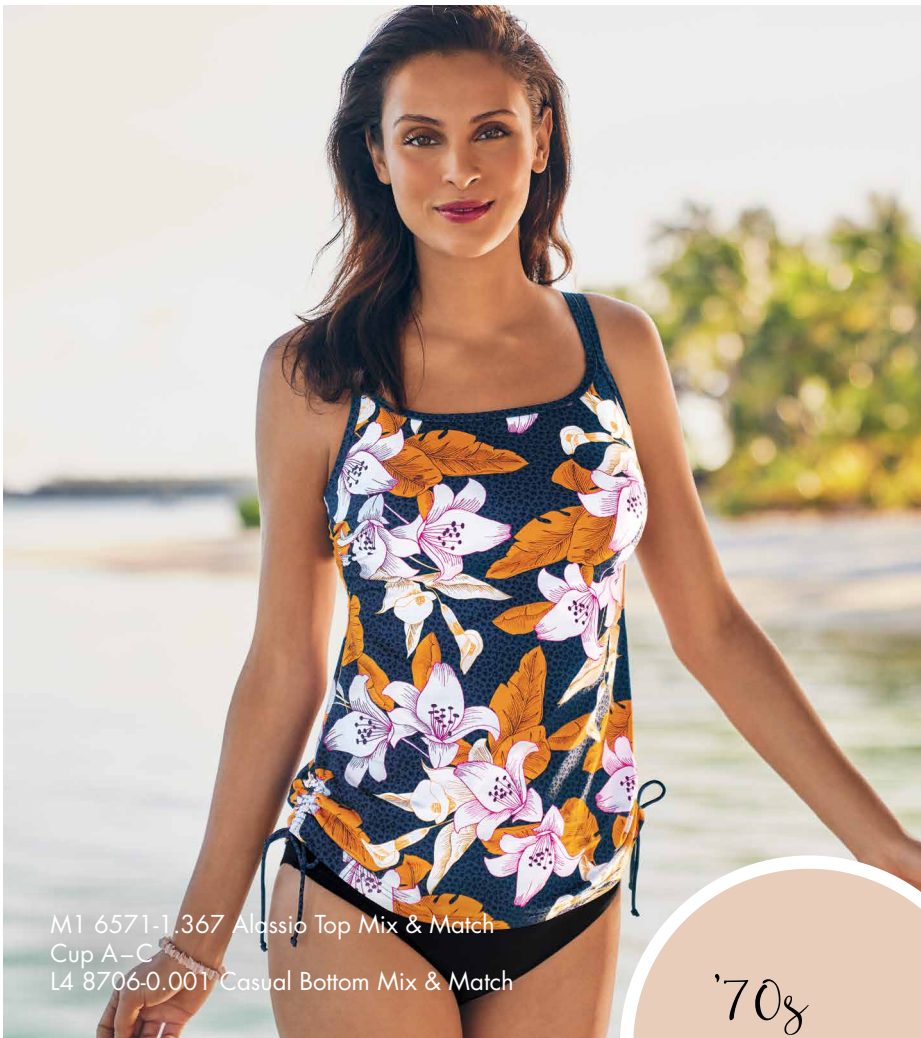
**PROMOTION**

M1 6551-1.367 Santa Marta Top  
Mix & Match · Cup A-C  
M1 8753-0.367 Ebru Bottom  
Mix & Match





CARE

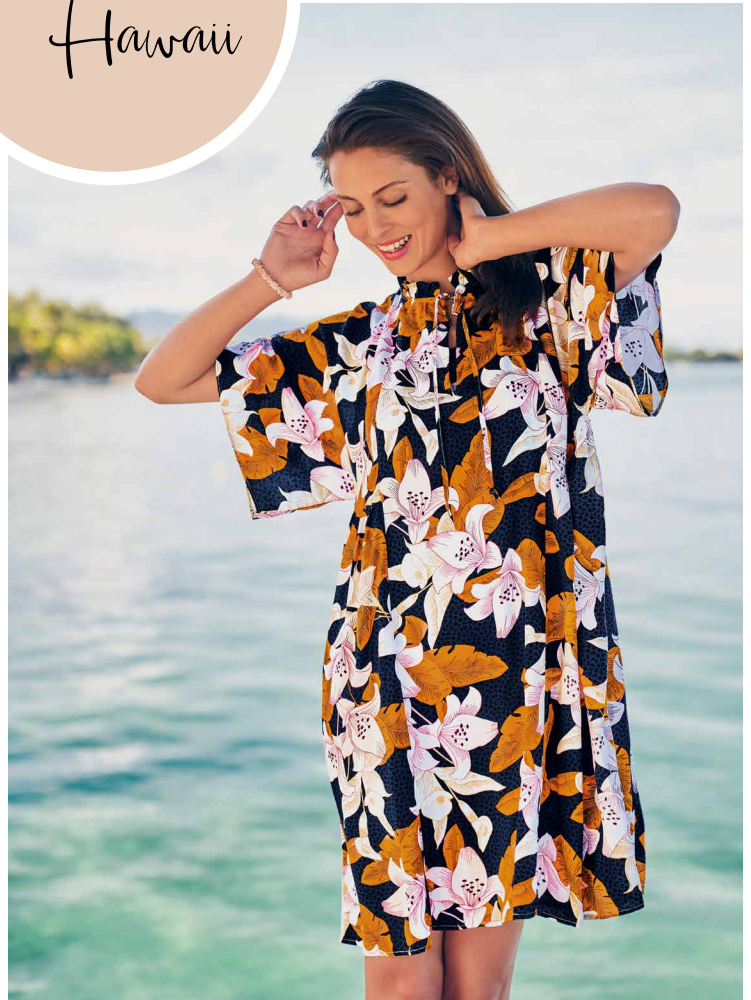


M1 6571-1.367 Alassio Top Mix & Match  
Cup A-C  
L4 8706-0.001 Casual Bottom Mix & Match

'70s  
Hawaii



M1 6271.367 Medellin · Cup B-D



M1 8603.367 Tahiti





M1 6283.203 Colombo  
Cup B-D





CARE



M1 6201.420 Austin · Cup B-E

Animal Heat



M1 8175.420 Garda



M1 6593.203 Paris · Cup B-C



*Zebra  
Love*



PROMOTION

M1 6253.430 Carini · Cup B-D





CARE

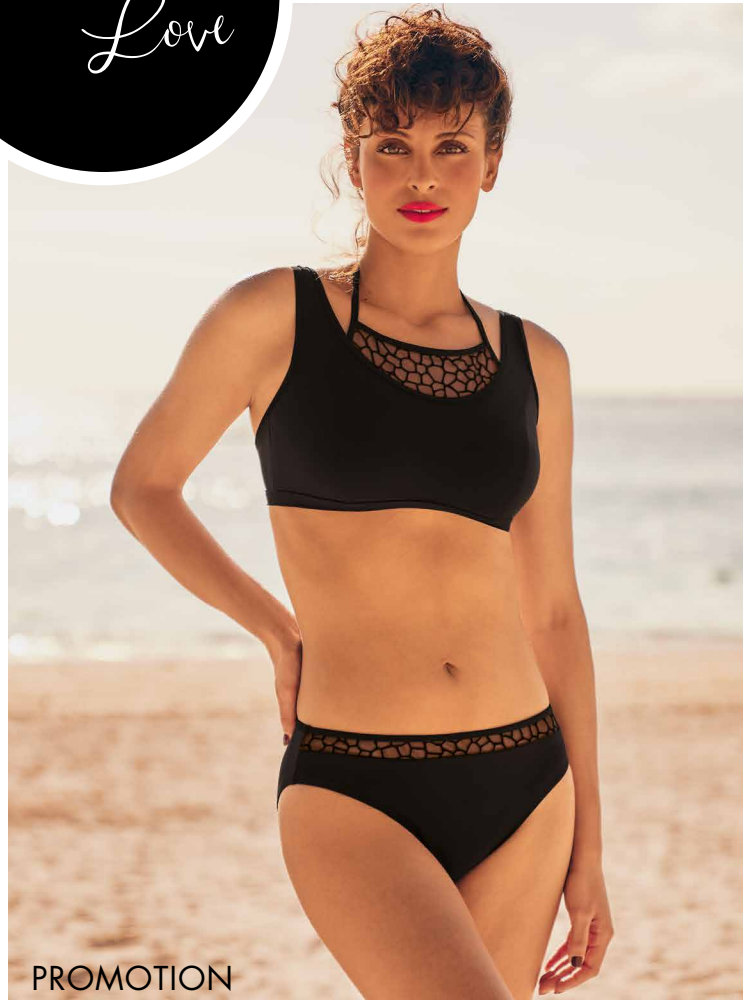


M1 6553-1.430 Toliara Top Mix & Match · Cup A-C  
M1 8731-0.430 Sally Bottom Mix & Match



PROMOTION

M1 6263.001 Vera · Cup A-C



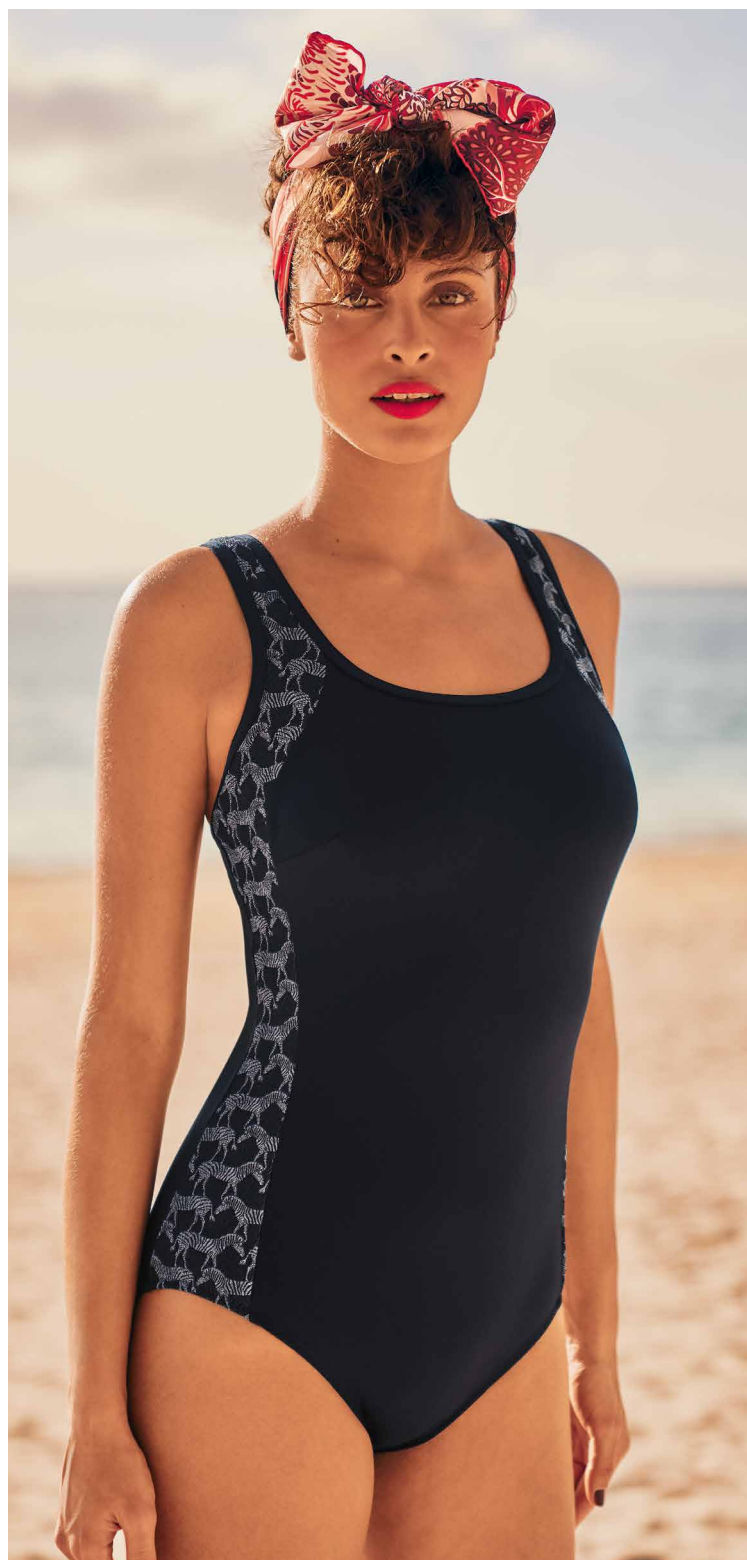
PROMOTION

M1 6533.001 Tabala · Cup A-C





M1 8661.430 Tahiti



M1 6243.434 Krabi · Cup B-C





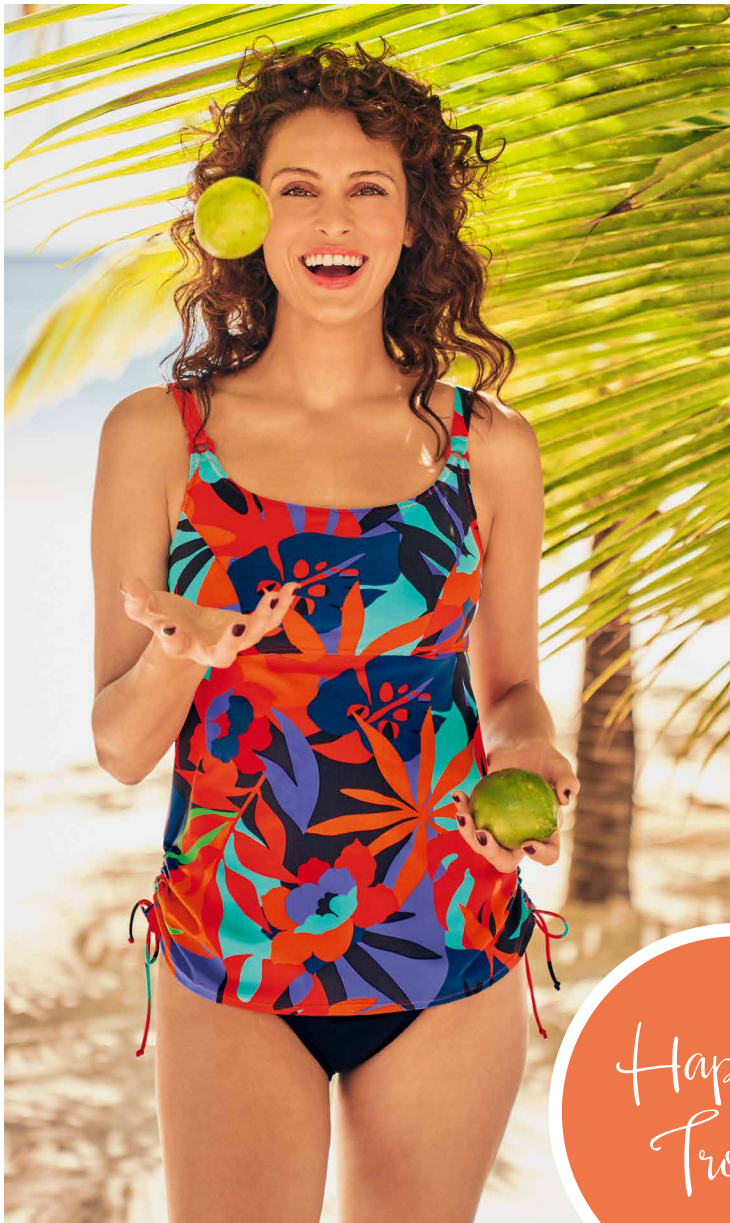
CARE

*Zebra  
Love*



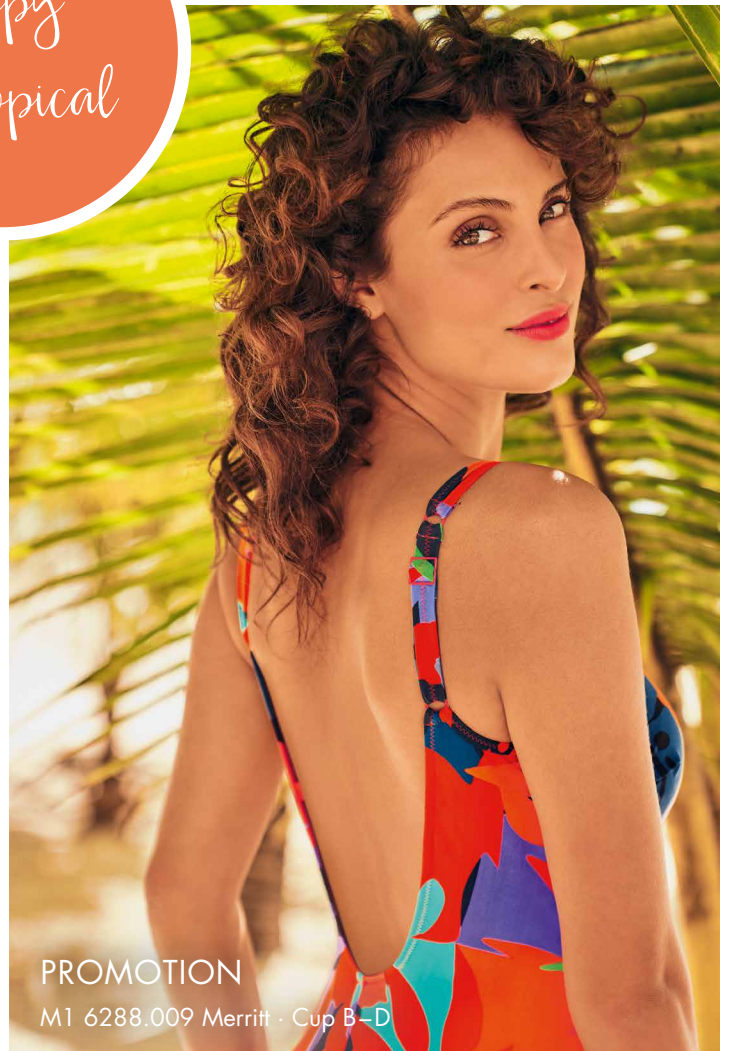
M1 6262.430 Safa · Cup B-D





Happy  
Tropical

M1 6588-1.009 Kimba Top Mix & Match · Cup B-D  
M1 8709-0.321 Comfort Bottom Mix & Match



PROMOTION

M1 6288.009 Merritt · Cup B-D





CARE

PROMOTION

M1 6288.009 Merritt · Cup B-D





M1 6591-1.327 Rimini Top Mix & Match - Cup B-C + M1 6591-0.327 Casual Bottom Mix & Match





CARE

Tropical  
Punch



M1 6223.327 Carini · Cup B-D

28 | 29





*Tropical  
Punch*

M1 6522-1.327 Alba Top · Cup B-D · Mix & Match + M1 6591-0.327 Casual Bottom Mix & Match





CARE



M1 6290.327 Safa - Cup B-C

30 | 31





M1 6209.318 Edina  
Cup B-C

### 1086X Pure Fresh

EUR: 55 - 115, INT: 0 - 12, FR: 70 - 130 • 100% Silicone



*New!*



### 1047X Pure Fresh Shell XS-XL

EUR: 50/55-90/95, INT: 00/0-7/8, FR: 65/70-105/110 • 100% Silicone





CARE

- D** Weiche Silikoneinlagen, abgestimmt auf die Anita care Badekollektion  
Beidseits verwendbar
- Die Silikoneinlagen wurden besonders zum Schwimmen und für sportliche Aktivitäten entwickelt
  - Sie sind Thermalbad geeignet, chlor- und Salzwasser beständig
  - Das Rippendesign der 1086X sorgt für:
    - einen guten Wasserablauf
    - und optimale Belüftung
  - 1086X: bis zu 25% leichter als vergleichbare Modelle
- E** Accesorio para el baño adaptado a la colección de baño de Anita care  
Utilizable a ambos lados
- Este accesorio ha sido desarrollado especialmente para la natación y otras actividades deportivas
  - Es apta para baños termales y resistente al cloro y al agua salada
  - 1086X La estructura:
    - de canales asegura una evacuación óptima del agua
    - y una buena climatización de la piel
  - 1086X: Hasta 25% más ligera que otros modelos similares
- F** Insert doux en silicone, adapté à la collection balnéaire Anita care  
Utilisable des deux côtés
- L'insert en silicone a été développé spécialement pour la natation et autres activités sportives
  - Modèle adapté pour les bains thermaux, qui résiste au chlore et à l'eau salée
  - 1086X Structure:
    - nervurée qui assure une bonne évacuation de l'eau
    - et une aération optimisée
  - 1086X: Jusqu'à 25% plus légères que les modèles comparables
- I** Morbido accessorio per il nuoto in silicone, coordinato alla collezione mare di Anita care  
Utilizzabile da entrambi i lati
- L'accessorio Pure Fresh in silicone è stato sviluppato appositamente per il nuoto e per le attività sportive
  - È indicato per i bagni termali ed è resistente al cloro e all'acqua salata
  - 1086X La struttura:
    - a scanalature assicura un buon deflusso dell'acqua
    - e un'ottima aerazione
  - 1086X: Pesa 25% in meno rispetto a modelli simili
- GB** Soft silicone insert, geared to the Anita care swimwear collection  
Can be used on both sides
- The silicone insert is especially designed for swimming and sports activities
  - Suitable for thermal baths; chlorine and salt-water resistant
  - 1086X The ribbed design:
    - makes sure that water runs off well
    - and ensures optimum breathability
  - 1086X: Up to 25% lighter than similar models
- NL** Zachte siliconenvorm, afgestemd op de Anita care badcollectie  
Aan beide kanten te gebruiken
- De siliconenvorm is speciaal voor zwemmen en sportieve activiteiten ontwikkeld
  - Geschikt voor thermaal bad, chloor- en zoutwaterbestendig
  - 1086X: Het ribbendesign:
    - zorgt voor een goede waterafvoer
    - en optimale luchtstroom
  - 1086X: Tot 25% lichter dan vergelijkbare modellen
- RUS** Мягкая силиконовая накладка хорошо сочетается с пляжной коллекцией Anita care  
Можно использовать с любой стороны
- Силиконовая накладка разработана для тех, кто любит плавать и активно занимается спортом
  - Подходит для купания в термальных источниках, устойчива к воздействию хлора и соленой воды
  - 1086X: Специальный ребристый дизайн тыльной стороны обеспечивает оптимальную циркуляцию воздуха, а также способствует быстрому отведению воды при плавании
  - 1086X: На 25% легче, чем полный протез



01/2021



2 - 3  
DESERT FLOWERS

11/2020



📷 M1 6278.526  
Baku (A)  
B-E, 38-48  
LYCRA® XTRA LIFE™ fibre

📷 M1 6378.526  
Praia (B)  
B-D, 38-52  
LYCRA® XTRA LIFE™ fibre

📷 M1 8612.526  
Lucca  
S-XL  
(36/38-48/50)

M1 8650.321  
Mokolea  
S-XL  
(36/38-48/50)



11/2020



4 - 5  
FRENCH BLUE  
SUMMER

Promotion



📷 M1 6228.321  
Carini (C)  
B-D, 38-48

📷 M1 6292.311  
Colina (A)  
A-D, 36-50  
optional halterneck

📷 M1 6538-1.321  
Alba Top  
B-D, 38-44  
MIX & MATCH

M1 8786-0.321  
Casual Bottom (3)  
MIX & MATCH

📷 M1 8736-0.321  
Ebru Bottom (5)  
36-48  
adjustable bottom  
MIX & MATCH

📷 M1 8646.321  
Samar  
S-L  
(36/38-44/46)



11/2020



6 1 9  
BLUE DOTS



📷 M1 6273.321  
Frascati (A)  
A, 38-44  
B-C, 38-48

📷 M1 6433.321  
Kista (B)  
B-D, 40-50

📷 M1 6573-1.321  
Alasio Top  
B-D, 38-48  
adjustable length  
MIX & MATCH

📷 M1 6563-1.321  
Mexicali Top  
B-C, 36-46  
MIX & MATCH

📷 M1 8771-0.321  
Ive Bottom (5)  
36-48  
adjustable bottom  
MIX & MATCH

📷 M1 8600.321  
Divar Dress  
S-L  
(36/38-44/46)



11/2020



10 - 13  
MIAMI STRIPES



📷 M1 6266.009  
Merritt (C)  
A-C, 36-44

📷 M1 6212.321  
Verona (A)  
A, 38-44  
B-D, 38-48

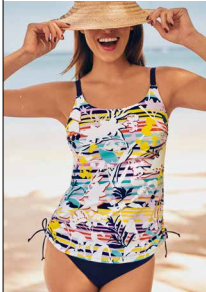
📷 M1 6265.009  
Albina (B)  
B-E, 38-48

M1 8660.009  
Papanui  
S/M-L/XL  
(36/42-44/50)





11/2020



10 - 13  
MIAMI STRIPES



📷 M1 6575-1.009  
Latino Top  
B-C, 38-46  
adjustable length  
MIX & MATCH



M1 8740-0.009  
Lorie Bottom (3)  
36-44  
adjustable bottom  
MIX & MATCH



M1 8760-0.009  
Casual Plus Bottom (3)  
36-44  
MIX & MATCH



M1 8848-0.009  
Lynn Bottom (3)  
36-46  
adjustable bottom  
MIX & MATCH



M1 8118.336  
Nacula  
S-XL  
(36/38-48/50)

11/2020



14 - 15  
BLUE FAN



M1 6387.329  
Dirban (B)  
B-D, 38-56  
E-F, 38-48  
LYCRA® XTRA LIFE™ fibre



📷 M1 6200.345  
Krabi (A)  
B-D, 38-50  
Polyester - with extra  
chlorine resistance



📷 M1 6487.329  
Stockholm (B)  
B-D, 38-52  
LYCRA® XTRA LIFE™ fibre



📷 M1 6587-1.329  
Kimba Top  
B-D, 38-52  
E, 38-48  
adjustable length  
LYCRA® XTRA LIFE™ fibre  
MIX & MATCH



📷 M1 8640.329  
Denia  
S-XL  
(36/38-48/50)

01/2021



16 | 17  
UNDER THE SEA



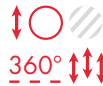
📷 M1 6272.009  
Carini (C)  
B-D, 38-46  
LYCRA® XTRA LIFE™ fibre



📷 M1 6209.318  
Edina (B)  
B-C, 38-44  
LYCRA® XTRA LIFE™ fibre



📷 M1 6562.009  
Mexicali (5)  
B-C, 38-44  
adjustable bottom  
LYCRA® XTRA LIFE™ fibre



📷 M1 8635.009  
Mari  
S-L  
(36/38-44/46)

11/2020



18 | 19  
'70s HAWAII



📷 M1 6271.367  
Medellin (B)  
B-D, 38-46



📷 M1 6571-1.367  
Alasio Top  
A-C, 38-46  
adjustable length  
MIX & MATCH



Promotion



📷 M1 6551-1.367  
Santa Marta Top  
A-C, 38-44  
multiway straps  
MIX & MATCH



Promotion



M1 8823-0.367  
Ebby Bottom (2)  
38-46  
MIX & MATCH



📷 M1 8753-0.367  
Ebru Bottom (5)  
38-46  
adjustable bottom  
MIX & MATCH



📷 M1 8603.367  
Tahiti  
S/M-L/XL  
(36/42-44/50)





📷 M1 6283.203  
Colombo (B)  
B-D, 38-48  
LYCRA® XTRA LIFE™ fibre



📷 M1 6201.420  
Austin (B)  
B-E, 36-52  
Polyester - with extra chlorine resistance



📷 M1 6593.203  
Paris (4)  
B-C, 38-46  
LYCRA® XTRA LIFE™ fibre



11/2020



📷 M1 8135.203  
Sofia  
one size

11/2020



📷 M1 8175.420  
Garda  
S-XL  
(36/38-48/50)



Promotion

📷 M1 6253.430  
Carini (C)  
B-D, 38-46



📷 M1 6243.434  
Krabi (A)  
B-C, 36-48  
Polyester - with extra chlorine resistance



📷 M1 6553-1.430  
Taliara Top  
A-C, 38-44  
MIX & MATCH



M1 8841-0.430  
Lynn Bottom (3)  
36-44  
adjustable bottom  
MIX & MATCH



📷 M1 8731-0.430  
Sally Bottom (3)  
36-44  
MIX & MATCH



📷 M1 8661.430  
Tahiti  
S/M-L/XL  
(36/42-44/50)



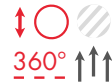
Promotion

📷 M1 6263.001  
Vera (A)  
A, 38-44  
B-C, 38-48



Promotion

📷 M1 6533.001  
Tabala (3)  
A-C, 36-46



📷 M1 6262.430  
Safa (C)  
B-D, 38-46



Promotion

📷 M1 6288.009  
Merritt (C)  
B-D, 38-46



📷 M1 6588-1.009  
Kimba Top  
B-D, 38-48  
adjustable length  
MIX & MATCH



M1 8833-0.009  
Lynn Bottom (3)  
38-46  
adjustable bottom  
MIX & MATCH



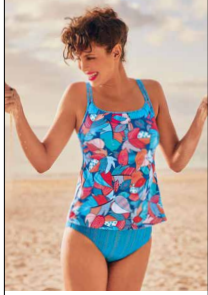
M1 8763-0.009  
Ive Bottom (5)  
38-46  
adjustable bottom  
MIX & MATCH



M1 8663.009  
Papanui  
S/M-L/XL  
(36/42-44/50)



01/2021



28 | 31  
TROPICAL PUNCH



📷 M1 6223.327  
Carini (C)  
B-D, 38-46  
LYCRA® XTRA LIFE™ fibre



📷 M1 6290.327  
Safa (C)  
B-C, 38-44  
LYCRA® XTRA LIFE™ fibre



📷 M1 6591-1.327  
Rimini Top  
B-C, 38-44  
LYCRA® XTRA LIFE™ fibre  
MIX & MATCH



📷 M1 6522-1.327  
Alba Top  
B-D, 38-44  
LYCRA® XTRA LIFE™ fibre  
MIX & MATCH



📷 M1 6591-0.327  
Casual Bottom (3)  
38-44  
LYCRA® XTRA LIFE™ fibre  
MIX & MATCH



M1 6538-1.321 Alba Top · Cup B-D · Mix & Match + M1 8736-0.321 Ebru Bottom Mix & Match



# MIX & MATCH

Bottoms by ROSA FAIA BEAUTYFULL

001 LT/DEL: 09/2020  
321 336 LT/DEL: 11/2020



M1 8707-0.336  
Liz Bottom (3)  
36-44



M1 8703-0.336  
Ive Bottom (5)  
38-48  
adjustable bottom



M1 8709-0.336  
Comfort Bottom (4)  
38-48  
adjustable bottom



📷 M1 8709-0.321  
Comfort Bottom (4)  
38-48



L4 8707-0.001  
Liz Bottom (3)  
36-44



L4 8703-0.001  
Ive Bottom (5)  
38-48  
adjustable bottom



L4 8709-0.001  
Comfort Bottom (4)  
38-54



M1 6587.1.329 Kimba Top Mix & Match · Cup B-E  
M1 8709-0.321 Comfort Bottom Mix & Match



L6 8712-0.001  
Myra Bottom (2)  
36-44  
adjustable bottom



📷 L4 8706-0.001  
Casual Bottom (3)  
36-46



L7 8896-0.001  
Nora Bottom (5)  
36-46  
adjustable bottom



L7 8898-0.001  
Kiki Bottom (5)  
36-46



L4 8710-0.001  
Kim Bottom (5)  
38-50  
adjustable bottom













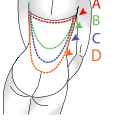




L9 8711-0.001  
Jil Shaping Bottom (4)  
38-48

## International sizes Swim / Dress size = Bra size

	S		M		L		XL		XXL		3XL	
D/EUR	36 = 70	38 = 75	40 = 80	42 = 85	44 = 90	46 = 95	48 = 100	50 = 105	52 = 110	54 = 115	56 = 120	58 = 125
France	38 = 85	40 = 90	42 = 95	44 = 100	46 = 105	48 = 110	50 = 115	52 = 120	54 = 125	56 = 130	58 = 135	60 = 140
Italy	40 = 2	42 = 3	44 = 4	46 = 5	48 = 6	50 = 7	52 = 8	54 = 9	56 = 10	58 = 11	60 = 12	62 = 13
GB	30 = 8	32 = 10	34 = 12	36 = 14	38 = 16	40 = 18	42 = 20	44 = 22	46 = 24	48 = 26	50 = 28	52 = 30
US	6 = 32	8 = 34	10 = 36	12 = 38	14 = 40	16 = 42	18 = 44	20 = 46	22 = 48	24 = 50	26 = 52	28 = 54



	Deutsch	English	Français	Español	Italiano	Nederlands
<b>Für alle Modelle/ For all articles:</b>	Mit steigender Größe wird der Beinausschnitt tiefer und der Rückenausschnitt höher	The leg styling becomes lower and the back higher as the size increases	Évolutifs, l'échancrure est plus basse et le dos plus haut dans les grandes tailles	A medida que aumente la talla, el recorte de pierna será más bajo y la cintura más alta	All'aumentare della taglia la sgambatura e la scollatura sul dorso si riducono	Bij grotere maten wordt de beuuitsnijding lager en het rugdecolleté hoger
	Alle Anita care Bikinis und Einteiler haben beidseitig Prothesentaschen integriert	All Anita care bikinis and swimsuits have integrated prostheses pockets on both sides	Tous les maillots de bain Anita care sont disponibles avec des poches bilatérales pour prothèse	Todos los bikinis y bañadores de Anita care constan de fundas protésicas en ambas copas	Tutti i bikini e i costumi interi Anita care sono dotati di taschine per protesi già cucite da entrambi i lati	Alle Anita care bikini's hebben aan beide zijden een geïntegreerd prothesehoesje
<b>MIX &amp; MATCH</b>	Kombination von einzelnen Bikini Tops und Tankinis mit verschiedenen Hosenformen, individuell und größenunabhängig	Combination of separate bikini and tankini tops with various bottom styles, individual and in different sizes	Mariage de hauts de bikini et de tankini avec différents bas de maillot de bain : au gré des envies et en alliant plusieurs tailles si nécessaire	Partes superiores de bikini y tankini a combinar con bragas de diferentes formas y tallas según gusto	Combinazione di singoli top (bikini e tankini) con slip di varie forme, a seconda dei gusti e indipendentemente dalla taglia	Combinatie van bikini- en tankinistops met verschillende slipmodellen, individueel en maat onafhankelijk
 <b>slimming effect</b>	Figurverschlanke Optik durch besondere Schnittführung	Slimming style due to special tailoring	Coupe spéciale qui donne un effet optique aminçissant	Estiliza la figura por su particular línea de corte	Il taglio speciale snellisce otticamente la figura	Slankmakende optiek door bijzondere snitvoering
<b>easy support</b> 	Funktionale Fütterung im Cupbereich	Functional lining in the cup area	Bonnet avec doublure fonctionnelle	Forro funcional en las copas	Coppe foderate per una tenuta ottimale	Functionele voering in de cup
<b>medium support</b> 	Mittlere Shapefunktion durch funktionelles Bauchfutter	Medium shape function due to functional tummy lining	Plastron ventral renforcé avec doublure fonctionnelle modérant la silhouette	Función moldeadora media gracias a un funcional forro en la zona del abdomen	Parte addominale foderata per modellare la figura	Middelzware Shapefunctie door functionele buikvoering
<b>strong support</b> 	Starke Shapefunktion durch 360° Funktionsfutter	High shape function due to 360° functional lining	Fonction modelante forte - Doublure à 360°	Función moldeadora fuerte gracias a forro 360°	Funzione modellante elevata grazie alla fodera a 360°	Sterke Shapefunctie door 360° functionele voering
<b>multiway straps</b>	Kann mit verschiedenen Trägerlösungen getragen werden	Can be worn with various strap styles	Combinaison possible avec différentes positions pour les bretelles	Puede combinarse con diferentes formas de tirantes	Si può indossare con diversi tipi di spalline	De schouderbanden kunnen op verschillende manieren gedragen worden
	Stabile, formgebende und kaschierende Schale für perfekten Halt	Firm, shaping and concealing cup for perfect support	Coques fermes, camouflantes et façonnées pour un maintien parfait	Cazoleta estable preformada para un ajuste perfecto	Coppetta stabile, modellante e ad effetto coprente per una tenuta perfetta	Stabiele, vormgevende en verhullende schalen voor perfecte ondersteuning
	Die Schale ist blickdicht, formend, sorgt für guten Halt und verhindert ein Abzeichnen der Brustwarze	The cup is opaque, shaping, provides firm support and prevents the nipple showing through	La coque soyeuse est douce et aérée, modèle le sein, procure un maintien optimal et évite que les mamelons ne se voient	Cazoleta opaca, da forma, confiere óptima sujeción y evita que se marque el pezón	La coppa è opaca, modellante, garantisce un ottimo sostegno ed evita che i capezzoli segnino	De cup is ondoorschijnend, vormend, zorgt voor goede steun en voorkomt het atfeken van de tepel
<b>360°</b> 	Das 360° Brustfutter sorgt rundum für besonders sicheren Halt	360° bust lining for all-round, ultimate support	La doublure circulaire à 360° tout autour de la poitrine assure un excellent maintien	El forro en el pecho 360° garantiza una óptima sujeción en todo el contorno	L'interno coppe è foderato a 360° per una tenuta perfetta	360° behoeving voor rondom extra comfortabele ondersteuning
	Verstellbarer Träger	Adjustable straps	Bretelles réglables	Tirantes regulables	Spalline regolabili	Verstelbare schouderbandjes
	Elastisches Funktionsfutter im Vorderbereich	Elastic functional lining in the front section	Doublure fonctionnelle sur l'avant	Forro elástico funcional en la parte delantera	Fodera elastica funzionale sul davanti	Elastische en functionele voering aan de voorkant
	Hochwertiges Anita Sichtfutter verhindert Transparenz	High quality Anita lining prevents transparency	La doublure Anita empêche la transparence	Forro antitransparencias de Anita de alta calidad	La pregiata fodera interna impedisce la trasparenza	Hoogwaardige Anita zichtvoering voorkomt transparantie
	Im Dekolleté extra hoch geschnitten	Cut is extra high at the décolleté	Le décolleté est découpé plus haut, plus couvrant	Escote especialmente alto	Particolarmente accollato	In decolleté extra hoog gesneden
	Verstellbare Dekolletéhöhe	Adjustable neckline height	Profondeur du décolleté réglable	Escote de altura regulable	Altezza del décolleté regolabile a piacere	Verstelbare decolleté-hoogte
	Rückenformen (A) gerader Rücken (B) runder Rücken (C) tiefer, runder Rücken (D) extra tiefer Rücken	Back styles (A) straight back (B) round back (C) low-cut, round back (D) extra low-cut back	Formes du dos (A) dos droit (B) dos arrondi (C) profond, et dos arrondi (D) dos très échancré	Tipos de espalda (A) espalda recta (B) espalda redondeada (C) espalda baja y redondeada (D) espalda extra baja	Tipi di taglio del dorso (A) dorso dal taglio dritto (B) dorso dal taglio arrotondato (C) dorso arrotondato, dal taglio profondo (D) dorso dal taglio particolarmente profondo	Rugvormen (A) rechte rug (B) ronde rug (C) diepe, ronde rug (D) extra diepe rug
	Hosenformen (1) small (2) medium (3) casual (4) comfort (5) Hipster	Bottom shapes (1) small (2) medium (3) casual (4) comfort (5) Hipster	Formes de culottes (1) small (2) medium (3) casual (4) comfort (5) Hipster	Tipos de braguita (1) small (2) medium (3) casual (4) comfort (5) Hipster	Forma dello slip (1) small (2) medium (3) casual (4) comfort (5) Hipster	Modellen slips (1) small (2) medium (3) casual (4) comfort (5) Hipster
<b>adjustable bottom</b>	Verstellbare Hosenform	Adjustable bottom	Culotte forme ajustable	Braguita regulable	Slip regolabile	Verstelbaar model slip
<b>adjustable length</b>	Verstellbare Seitenlänge	Sides can be adjusted in length	Côtés à longueur réglable	Longitud ajustable en los laterales	Lunghezza laterale regolabile	Verstelbare zijlengte
<b>Polyester – with extra chlorine resistance</b>	Starke Chlor- und Sonnenlichtresistenz sowie schnell trocknend	Long-lasting chlorine and sun-light resistance, fast-drying	Résistance particulière au chlore et au soleil. Séchage rapide	Fuerte resistencia al cloro y a los rayos solares, además de secar rápidamente	Elevata resistenza al cloro e ai raggi solari. Ad asciugatura rapida.	Sterke chloor- en zonlichtresistentie en sneldrogend
<b>LYCRA® XTRA LIFE™ fibre</b>  LYCRA is a trademark of INVISTA	Die Faser LYCRA® XTRA LIFE™ widersteht durch Pool-Wasser und Sonnencreme verursachten Passformverlust und Faserbruch und sorgt für langlebige Formbeständigkeit und Passform	The LYCRA® XTRA LIFE™ fibre withstands damage and loss of shape caused by pool water and sun cream and ensures long-lasting shape retention and fit	La fibre LYCRA® XTRA LIFE™ reste insensible à la perte de modèle et à la rupture des fibres qu'occasionnent normalement l'eau de piscine et la crème solaire. Elle se fait ainsi le garant d'une forme et d'un modèle immuables à long terme	La fibra LYCRA® XTRA LIFE™ es resistente a las posibles deformaciones de ajuste o rupturas de tejido provocadas por aguas de piscina y cremas solares y garantiza que pueda disfrutar por largo tiempo de una prenda con buen ajuste	La fibra LYCRA® XTRA LIFE™ contrasta la perdita di forma e le rotture dovute all'acqua della piscina e alla crema solare e assicura indeformabilità e vestibilità durature	De vezel LYCRA® XTRA LIFE™ is beter bestand tegen verlies van pasvorm en vezelschade als gevolg van zwembadwater en zonnecrème en zorgt voor langdurige vormbestendigheid en pasvorm

Cover: M1 6253.430 Carini · Cup B-D PROMOTION  
M1 6263.001 Vera · Cup A-C PROMOTION



**TROU AUX BICHES**  
BEACHCOMBER  
GOLF RESORT & SPA



CARE

[b2b.anita.com](http://b2b.anita.com)



M1 W671Y-06/20